

# METATRON®

## NONLINEAR DIAGNOSTIC SYSTEM

This is the most precise,  
informative and safe method  
for express overall body diagnostic



---

# BEST INVESTMENT FOR YOUR MEDICAL AND HEALTHCARE BUSINESS

---

OUR PRODUCTS ARE ALREADY USED BY:



Doctors and  
medical practitioners



Sanatorium  
resorts



Fitness centers  
and spas



Medical  
Clinics



Oriental Medicine  
Centers



Sports Medicine  
Specialists



Diagnostic  
rooms



Scientific research  
centers



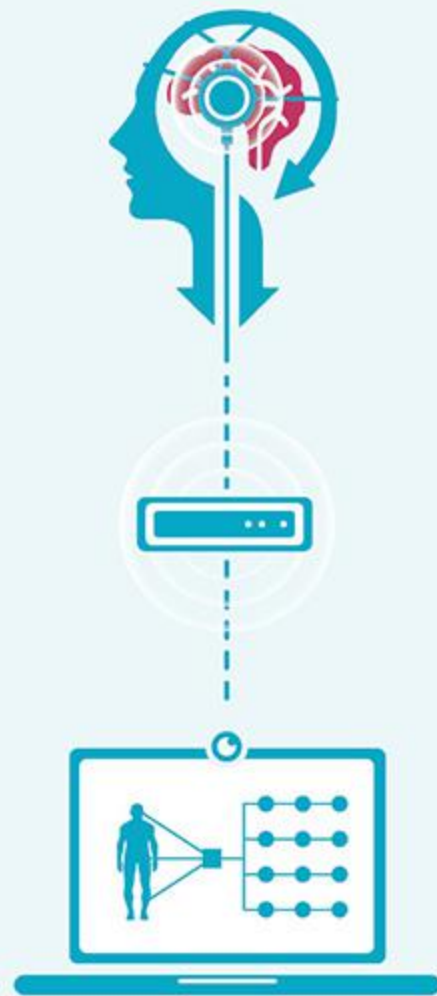
Distributors of homeopathic medi-  
cines and dietary supplements

---

# THE PRINCIPLE OF THE METHOD

---

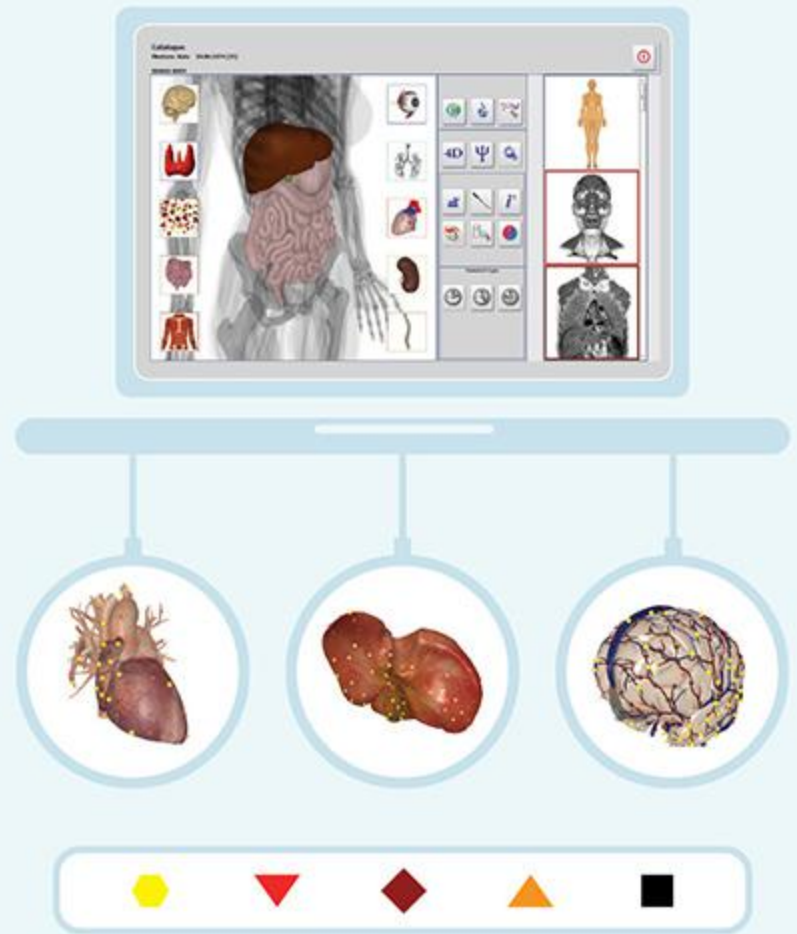
- ▶ **Bio-resonance-** or **NLS-diagnostics** aim at obtaining information about the state of your health using computer and special programs. The data about an objective state of body tissues, cells, chromosomes and even hormones are being transmitted in real-time and instantly decoded in the form of specific diagnoses and recommendations.



---

# HOW DOES IT WORK?

- 
- ▶ All the information about the state of your body is delivered to the **brain**. We are using special trigger sensors which are shaped as headphones in order to connect to it (which are tuned to the same frequency). Furthermore, we use special software in order to obtain the data, to decode it and to display on the screen in the form of three-dimensional models of organs, tissues and cells. We use specific marker system to highlight their actual conditions - normal or abnormal (in total we have 6 evaluation criterions).





---

## INSTITUTE OF PRACTICAL PSYCHOPHYSICS

We are direct developers of the NLS-diagnostic methodology in general and both hardware (appliances) and software in their original form

90% of comparable products are our copies or replicas

WE ARE

№ 1

---

## OUR KEY DATA FOR 18 YEARS

**7500**

units  
sold

---

in 4 different  
versions

**10**

types of software  
applications developed

---

available in 8 languages  
eng / de / esp / fr / it  
中國 / 日本 / русский

**60**

scientific conferences  
organized

---

more than 1,500 people  
from 34 countries  
participants

**10 000**

etalons are already  
in our database

---

their number is  
constantly growing

---

# METATRON PRODUCTS ARE REPRESENTED IN **39** COUNTRIES

## Australia

Australia  
New Zealand

## Amerika

Argentina  
Canada  
Chile  
Columbia  
USA  
Venezuela

## Asia

China  
India  
Indonesia  
Japan  
Kazakhstan  
Malaysia  
Pakistan  
Philippines  
South Korea  
Taiwan  
UAE  
Usbekistan

## Europe

Austria  
Belgium  
Bulgaria  
Czech Republic  
France  
Germany  
Italy  
Latvia  
Lithuania  
Moldova  
Netherlands  
Portugal  
Romania  
Russia  
Serbia  
Slovakia  
Switzerland  
Ukraine



countries, where we are already represented



countries, where we are not yet represented

15

REASONS

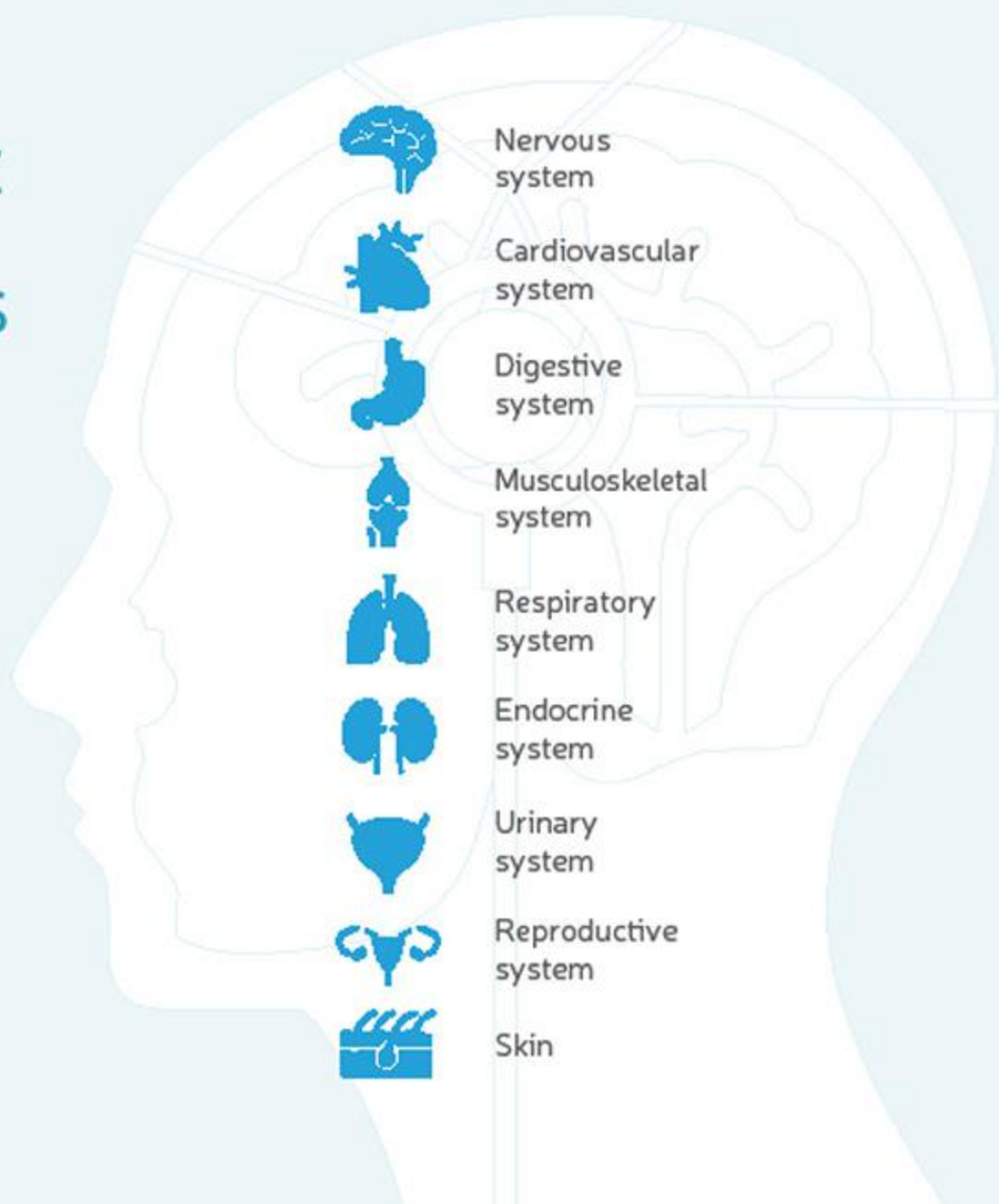
---

WHY OUR CLIENTS  
HAVE CHOSEN US



Nº 1

**METATRON** MAKES IT  
POSSIBLE TO EXAMINE  
ALL BODY SYSTEMS  
WITHOUT EXCEPTIONS  
IN A SINGLE SESSION



Nervous  
system

Cardiovascular  
system

Digestive  
system

Musculoskeletal  
system

Respiratory  
system

Endocrine  
system

Urinary  
system

Reproductive  
system

Skin



№ 2

## HIGH ACCURACY OF NLS-DIAGNOSIS

ALLOWS TO IDENTIFY PATHOLOGY  
AT EARLY STAGES OF APPEARANCE

NLS-diagnosis compared with other machine inspection methodologies

NLS-diagnosis



65,4%

MRT



23,4%

TOMOGRAPHY



14,8%

ULTRASONOGRAPHY



13,9%

Average accuracy of diagnosis by comparing clinical research results on 5 areas: Gastroenterology, Pulmonology, Gynecology, Endocrinology, and Endocrinology

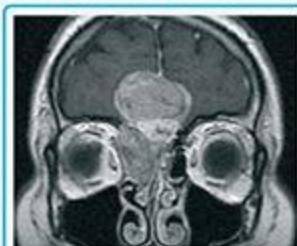
Nº 3

## HIGH LEVEL OF VISUALISATION

NLS-DIAGNOSIS COMPARED  
WITH OTHER MACHINE  
INSPECTION METHODOLOGIES



Brain tumor, frontal view



MRT



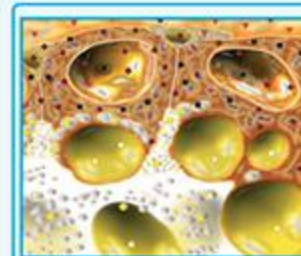
NLS-DIAGNOSIS



Breast cancer



ULTRASONOGRAPHY



NLS-DIAGNOSIS



Rectal cancer



TOMOGRAPHY



NLS-DIAGNOSIS



№ 4

## ABSOLUTELY SAFE AND USER-FRIENDLY

NLS- DIAGNOSTIC WITH  
**METATRON®** WON'T CAUSE  
ANY DISCOMFORT AND HARM  
TO THE PATIENT'S HEALTH



Non-invasive



Free of radiation



No internal probing



No need for medical tests\*

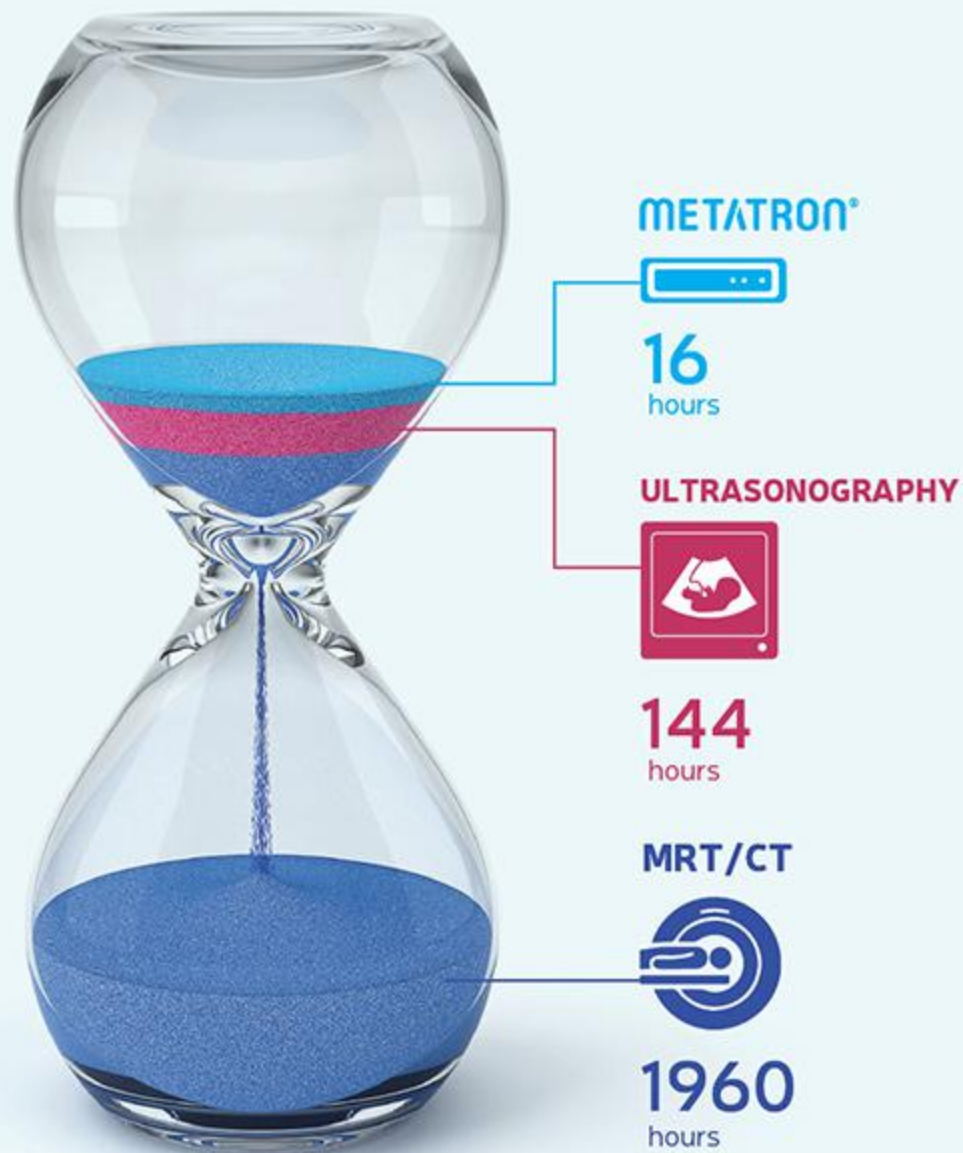
\* data from biochemical blood analysis results (provided from laboratories) can be added to the software and be used during diagnostics



№ 5

## MINIMAL TRAINING TIME FOR METATRON® – APPLIANCE

STANDARD TRAINING  
TIME COMPARED WITH  
OTHER TYPES OF DIAGNOSTICS





Nº 6 —————

## MULTIFUNCTIONALITY OF DIAGNOSTICS

Identification  
of allergens



Detection and suppression  
of infectious agents such as  
viruses, bacteria, fungi, helminthes



Evaluation of stress  
adequacy in sports



Evaluation of human predisposition  
to certain diseases



Process monitoring of  
treatment and rehabilitation



## INDIVIDUAL SELECTION OF DRUGS AND DIETS



Drugs



Homeopathy



Phytodrugs



Lithotherapy



Dietary supplements



Preparations of  
Oriental medicine



Bach flower  
essences



Food and Alcohol



№ 8

## DIAGNOSTICS PROCESS IS MUCH EASIER AND BETTER UNDERSTANDABLE

1. The session starts with a small-talk in order to calm the patient and to establish credibility (psychological condition of patient has a direct influence on the accuracy of the diagnostics). Other special conditions to provide a diagnostic are not necessary – the patient just needs to be at the normal, balanced state.



40 minutes

average diagnostic time using METATRON

2. Special trigger sensors (similar to headphones) are put on the patient's head. Thereafter, scanning process begins: all or particular areas are examined. There are 4 examination types available: full, standard, express, and special one for particular organs. During this procedure **6 various states of cells and tissues are displayed on their virtual models** (on the display), using the **special marker system**. This makes possible for the specialist even at this stage to identified problematic areas for a later detailed examination.

4. The specialist instantly adds revealed deviations such as pathologies, infectious agents or other deviations, into the final examination report (epicrisis). The epicrisis can also include proposal for treatment, preventive measures, nutritional eating, which are automatically put together from **the criteria database** (each criterion has its own description).

A STANDARD DIAGNOSTIC PROCEDURE USING METATRON:

3. Specialist examines all areas and organs which are identified as problematic in detail. **Intuitive interface and a system of horizontal slices make the detailed examination of particular organ (up to its cell structure) possible.** Virtual 3D model of the patient's organs visualizes the center of contamination at the needed perspective.

5. The epicrisis is issued to the patient in printed form, it includes both proposals for re-diagnosis after going through the whole recommended preventive or rehabilitation course (if the specialist will reveal some serious health issues, the patient is recommended to visit the expert in some specific area) and bio-resonance therapy. This last procedure is provided in 2 versions: Meta Therapy and Nosode Therapy.

№ 8

## DIAGNOSTICS PROCESS IS MUCH EASIER AND BETTER UNDERSTANDABLE

1. The session starts with a small-talk in order to calm the patient and to establish credibility (psychological condition of patient has a direct influence on the accuracy of the diagnostics). Other special conditions to provide a diagnostic are not necessary – the patient just needs to be at the normal, balanced state.



40 minutes

average diagnostic time using METATRON

2. Special trigger sensors (similar to headphones) are put on the patient's head. Thereafter, scanning process begins: all or particular areas are examined. There are 4 examination types available: full, standard, express, and special one for particular organs. During this procedure **6 various states of cells and tissues are displayed on their virtual models** (on the display), using the **special marker system**. This makes possible for the specialist even at this stage to identified problematic areas for a later detailed examination.

4. The specialist instantly adds revealed deviations such as pathologies, infectious agents or other deviations, into the final examination report (epicrisis). The epicrisis can also include proposal for treatment, preventive measures, nutritional eating, which are automatically put together from **the criteria database** (each criterion has its own description).

A STANDARD DIAGNOSTIC PROCEDURE USING METATRON:

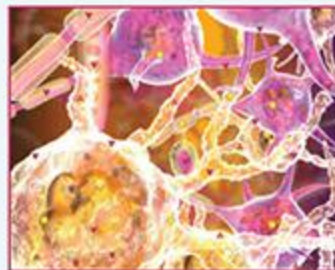
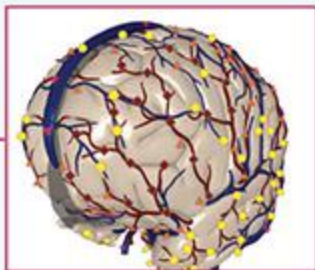
3. Specialist examines all areas and organs which are identified as problematic in detail. **Intuitive interface and a system of horizontal slices make the detailed examination of particular organ (up to its cell structure) possible.** Virtual 3D model of the patient's organs visualizes the center of contamination at the needed perspective.

5. The epicrisis is issued to the patient in printed form, it includes both proposals for re-diagnosis after going through the whole recommended preventive or rehabilitation course (if the specialist will reveal some serious health issues, the patient is recommended to visit the expert in some specific area) and bio-resonance therapy. This last procedure is provided in 2 versions: Meta Therapy and Nosode Therapy.

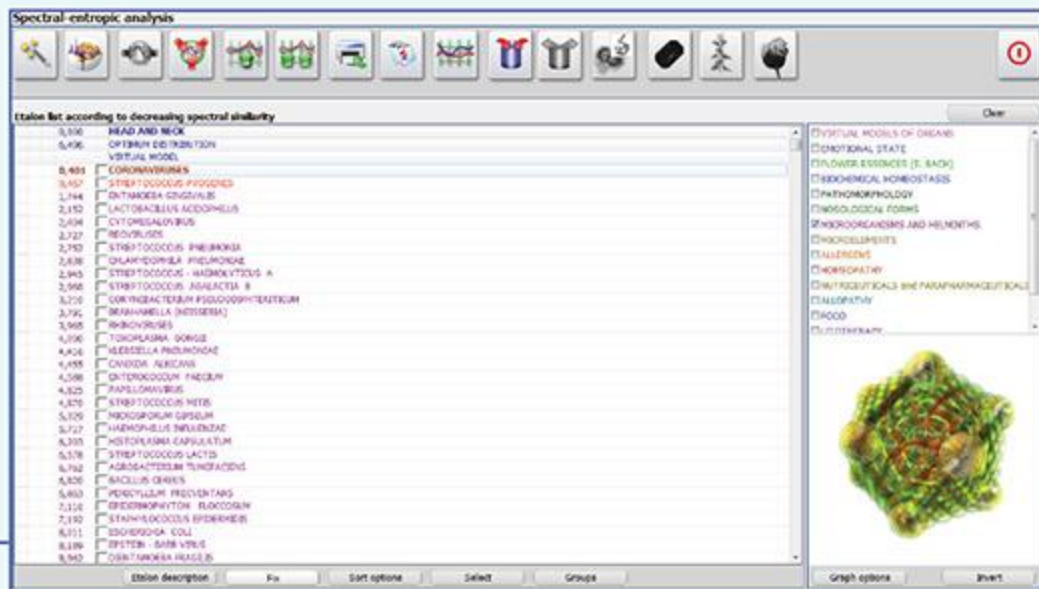


No 9

# INTUITIVE USER-FRIENDLY INTERFACE OF THE SOFTWARE



Spectral-entropic analysis

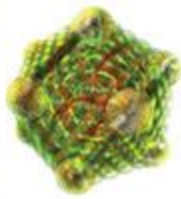


Taxon list according to decreasing spectral similarity

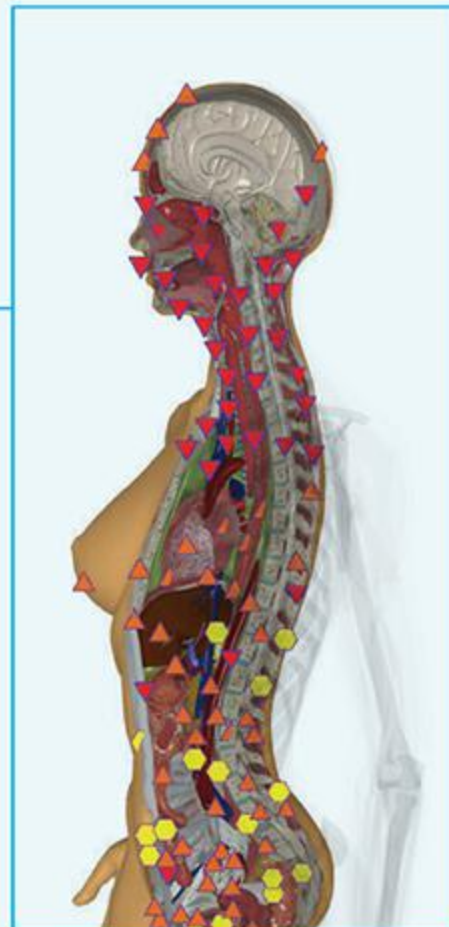
| Rank  | Taxon                            |
|-------|----------------------------------|
| 0,100 | HEAD AND NECK                    |
| 0,406 | OPHRYN DIDYMIUM                  |
|       | VEREJIA MORS                     |
| 0,404 | CORONAVIRUS                      |
| 0,407 | STREPTOCOCCUS PYROGENES          |
| 1,144 | DENTIMYIA GINGIVALIS             |
| 2,110 | LACTOBACILLUS ACIDOPHILUS        |
| 2,094 | CYTOBACILLUS                     |
| 2,127 | REOVIRUS                         |
| 2,140 | STREPTOCOCCUS PNEUMONIAE         |
| 2,636 | CHLAMYDOMYXA PNEUMONIAE          |
| 2,945 | STREPTOCOCCUS HAEMOLYTICUS A     |
| 2,968 | STREPTOCOCCUS ASHLEYI B          |
| 3,210 | CORYNEBACTERIUM PSEUDOTUBERCULUM |
| 3,792 | BRANHAMIELLA (NEISSERA)          |
| 3,905 | RHINOVIRUS                       |
| 4,106 | TORIKLASMA GORGIS                |
| 4,426 | HEBEBELLA PNEUMONIAE             |
| 4,485 | CHONDA KURZANI                   |
| 4,506 | CHITROCOCCUM FREUDI              |
| 4,825 | PAPILLOMAVIRUS                   |
| 4,870 | STREPTOCOCCUS MITIS              |
| 5,100 | NISSAGORUM GYPSUM                |
| 5,127 | HAEHOPHILUS INFLUENZAE           |
| 6,300 | HISTOPLASMA CAPSULATUM           |
| 6,576 | STREPTOCOCCUS LACTIS             |
| 6,762 | ASBROACTESUM TUMIDUM             |
| 6,820 | BACILLUS GERMIS                  |
| 6,860 | PEDICELLUM PRESIDENTIS           |
| 7,116 | SPERMOPHYTON BLOCCOLIN           |
| 7,190 | STAPHYLOCOCCUS EPIDERMIDIS       |
| 8,101 | ESCHERICHIA COLI                 |
| 8,189 | SPUTER - SINE VIRIS              |
| 8,940 | ZONITARIBIA REAGIS               |

Over

- CYSTICAL MOODS OF ORGANS
- EMOTIONAL STATE
- FLOWER ESSENCE (E. RACH)
- ETHICHEMICAL HOMEOSTASSIS
- ETHYOMORPHOLOGY
- ETHOLOGICAL FORMS
- ETHOCORRELATIONS AND HELMINTHS
- ETHOCORRELATIONS
- CHALLENGERS
- ETHRODIPHTHY
- ETHYFROGENTICALS AND PARAPHARMACEUTICALS
- ETALOPHETIV
- ETACOD
- ETHYCHERAPHY



Graph options Invert



№ 10

## THERAPEUTICAL FEATURES OF METATRON®



Appliance Metatron makes it possible not only to understand the level and cause of health problems, but also directly influence their elimination.

**The essence of** so called **bio-resonance therapy** lies in the transmission of the information, namely, standard values, to the brain. Standard values include electromagnetic frequencies for all organs and body systems in their healthy state.

The information can be transmitted on two ways:

- **Nosode Therapy** (Information is saved on the special matrix, e.g. pure alcohol, it will be digested by body during the regular use of nosodes)
- **Meta Therapy** (signal is transmitted through bio-inductors directly to the brain, while correct wrong frequency till the optimal value for the cells). If desired, this information can be empowered by destructive properties - tuned to a frequency that causes damages to the various types of bad micro-organisms





№ 11

## WE ARE DYNAMICALLY PROGRESSING

WE CONSTANTLY MODIFYING THE  
HARDWARE AND UPDATING THE  
SOFTWARE APPLICATIONS, ADDING  
NEW FEATURES AND CRITERIONS  
MOREOVER, WE ARE ADAPTING THEM TO  
DIFFERENT REGIONS AND COUNTIES

### MAIN STAGES OF OUR DEVELOPMENT



1997

2005

2006

2011

2012

Oberon  
Metapathia

Metatron 4017  
NutriSoft Emerald

Metatron 4025  
Metapathia GR Hunter

Metatron 4025  
Metapathia GR Clinical

Metatron 4025  
Red Dragon



№ 12 

---

## WE PROVIDE A FULL PACKAGE OF REGULAR TECHNICAL, INFORMATIONAL SUPPORT FOR OUR CUSTOMERS

INCLUDING POST-SALES SERVICE



Full guarantee  
maintenance  
during 18 months



Distant (online) solving of  
problems caused by software



Immediate answer  
to any questions thorough  
any communication channels



Regular newsletter about  
news and software updates



Immediate replacement of  
hardware elements  
(during 2-3 days)



All necessary promotional  
materials at your disposal

№ 13

# WE REGULARLY GO THROUGH CLINICAL TESTING AND CERTIFICATION, BASED ON THE MAIN CRITERIA OF QUALITY AND SAFETY FOR MEDICAL APPLIANCES



OUR PRODUCTS ARE CERTIFIED BY:



International Quality Certificate  
ISO 13485 (industry standard  
for manufacturers of medical appliances)



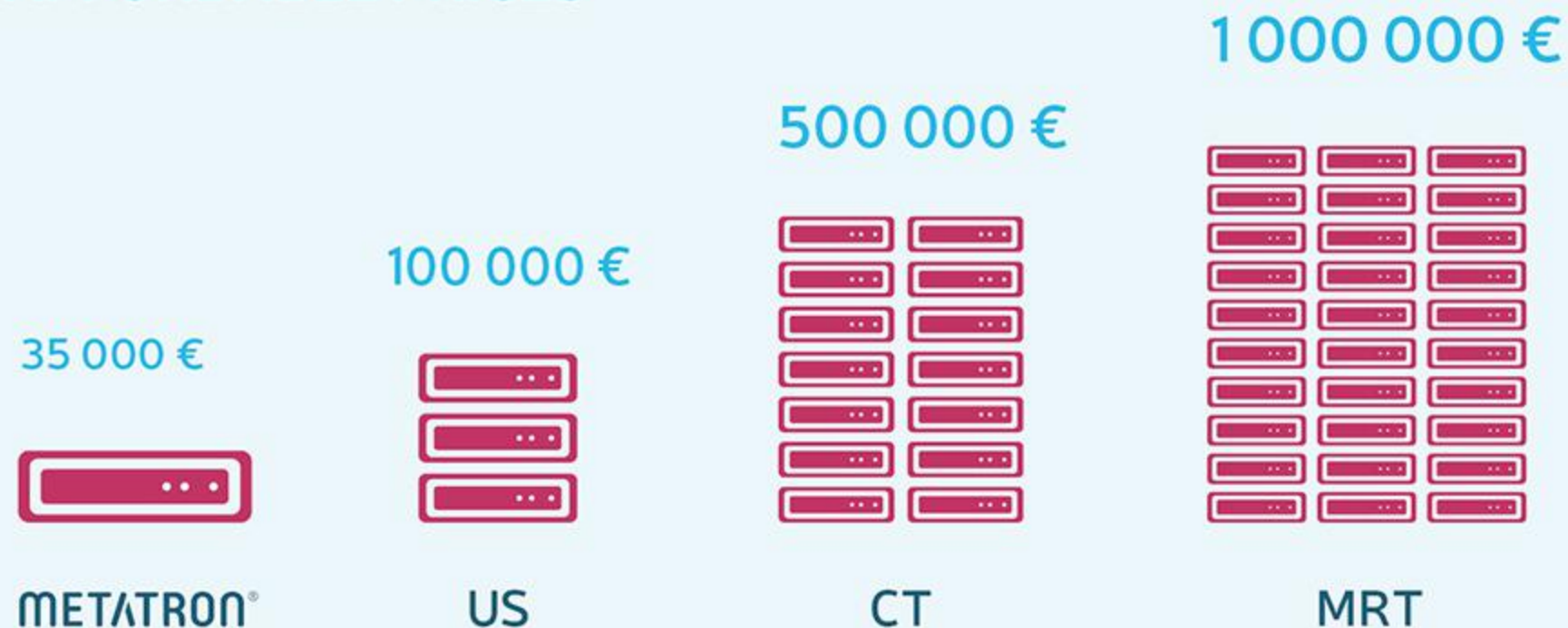
CE – mark of conformity to the European  
Union standards on product safety  
to human health and the environment



FDA – mark of conformity to the Ministry of  
Health of the United States standards on food  
safety, drugs, cosmetics and medical appliances

Nº 14

## AFFORDABLE PRICES



Price comparison for the new Metatron appliance and rebuilt machines for ultrasound diagnosis, computed - and magnetic resonance imaging (in Euros, data taken from [www.euromedcompany.ru](http://www.euromedcompany.ru))





Nº 15 ———

**WE HAVE A CLEAR VISION  
HOW TO USE ALL METATRON®  
FEATURES IN ORDER  
TO DEVELOP YOUR BUSINESS**

- ▶ Open **diagnostic centers** or **medical rooms**
- ▶ Provide additional services to medical clinics and supply doctors with **mobile diagnostics systems** (at the patient's homes or work places)
- ▶ Scale up services of health centers through the cooperation with **distributors of medical and homeopathic products**